

**Hycult<sup>®</sup>Biotech**

Let's improve **health**

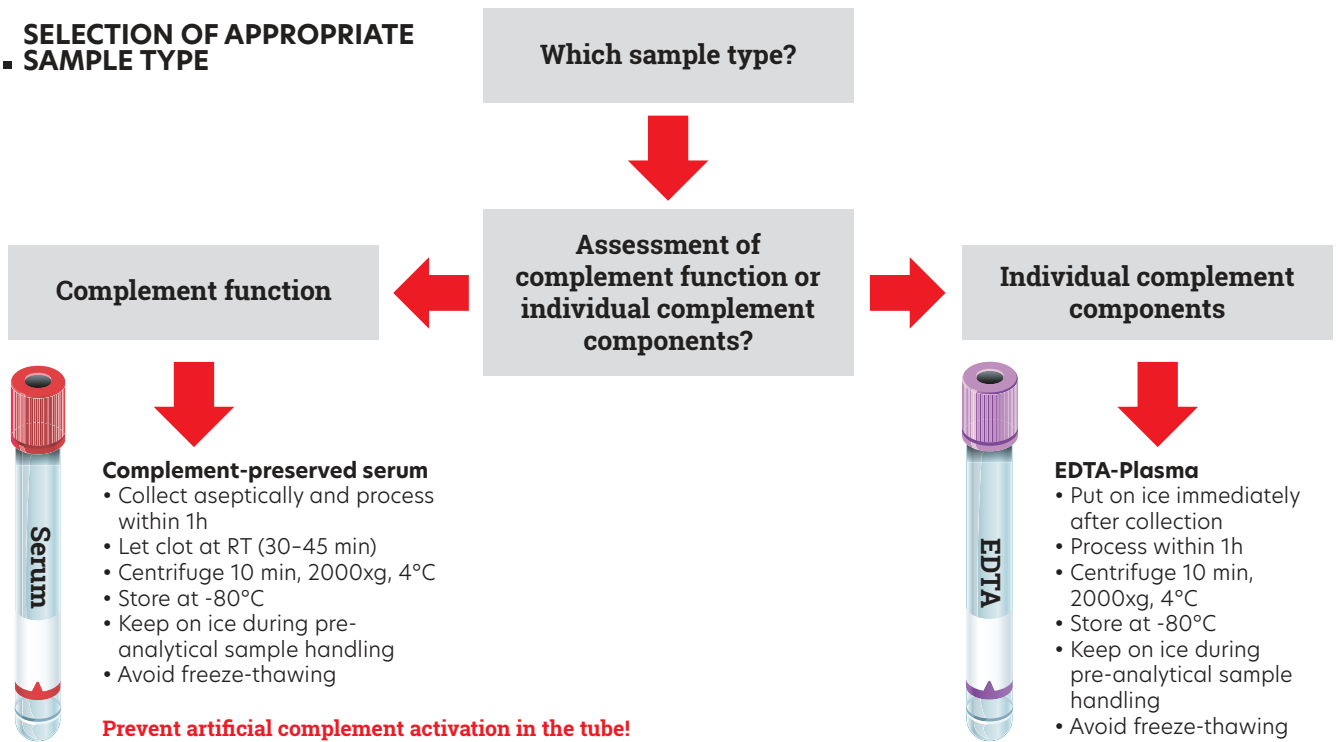
# **Tools for complement research**

Together, we improve **health**. Collaborate to achieve success, **your goal is our goal**.

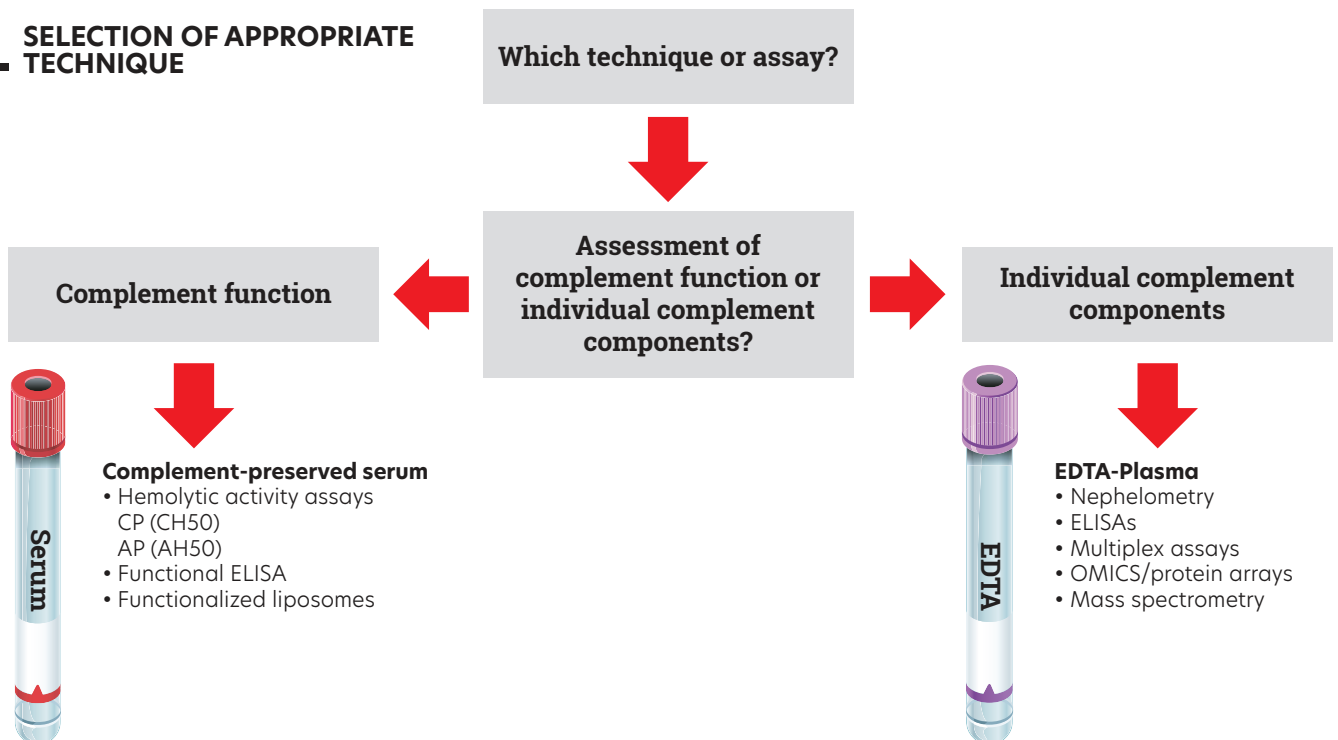
# Flowchart

Use the flowchart for the selection of: A) The appropriate sample type or B) The appropriate technique for the assessment of complement.

## A. SELECTION OF APPROPRIATE SAMPLE TYPE



## B. SELECTION OF APPROPRIATE TECHNIQUE



# General Introduction

As a leading developer and manufacturer of complement research tools, we take pride in our work. Our mission has always been to find answers to your questions and work towards improving health. We have been fulfilling this mission since 1994.

Our team possesses extensive expertise in the development and production of assays, antibodies, and proteins. We are committed to supporting scientists worldwide in their research on human diseases.

## Complement

The complement system is a crucial part of the immune system, consisting of a group of proteins that work together to defend the body against infections and support immune responses. It plays a pivotal role in recognizing and eliminating pathogens, promoting inflammation, and facilitating the removal of cellular debris.

Research on the complement system is vital for several reasons. Firstly, it helps in understanding its complex interactions with other components of the immune system, shedding light on the mechanisms behind immune responses. Secondly, studying the complement system aids in developing therapeutic strategies for various immune-related disorders and autoimmune diseases. Especially after the successful introduction of Eculizumab and C1-INH, more complement based therapeutics are approved for clinical trials or use.

Overall, comprehensive research on the complement system contributes to advancing immunology, paving the way for improved treatments and preventive measures for a wide range of health conditions.

**Let's improve health**

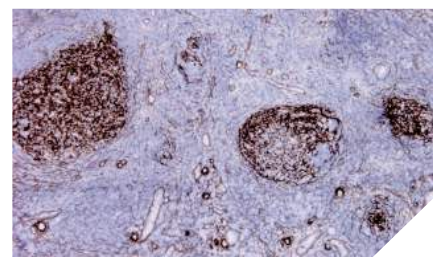
**Looking for other products related to complement?**

Visit our website  
[www.hycultbiotech.com](http://www.hycultbiotech.com)

Validated ELISA kit sample types:

<b>BF:</b> Bronchoalveolar fluid (BAL)	<b>CF:</b> Cerebrospinal fluid
<b>CS:</b> Cell culture supernatant	<b>F:</b> Feces
<b>O:</b> Other	<b>P:</b> Plasma
<b>S:</b> Serum	<b>SA:</b> Saliva
<b>SF:</b> Synovial fluid	<b>SP:</b> Sputum
<b>U:</b> Urine	<b>TH:</b> Tissue homogenate

ELISA kits for human		
Product name	Sample types	Cat. #
C1-INH	P S	HK396
C1s/C1-INH	P S	HK399
C1q	BF P S	HK356
C3	P S	HK366
C3a	BF P S U	HK354
C3c	P S	HK368
<b>C3d</b>	<b>P</b>	<b>HK3017 NEW</b>
C5	P S	HK390
C5a	P S	HK349
Coagulation factor XII	P S	HK373
Collectin-10	P S	HK364
Complement factor B	P S	HK367
Complement factor D	P S U	HK343
Complement factor H	P S U	HK342
Complement factor I	P S U	HK355
Factor H, 402H/Y variant detection	P S	HK353
Ficolin-1	P S	HK357
Ficolin-2	CS P S	HK336
Ficolin-3	CS P S	HK340
gC1qR	P S	HK362
<b>Human Alternative Pathway</b>	<b>S</b>	<b>HK3012 NEW</b>
<b>Human Classical Pathway</b>	<b>S</b>	<b>HK3010 NEW</b>
MAp44	P S	HK359
MASP-1/C1-INH	P S	HK3001
MASP-2	CS P S	HK326
MBL	CS P S	HK323
Properdin	BF CF P S U	HK334
sCD59	P S	HK374
SP-D	BF CS P	HK335
TCC	CF CS P SF U	HK328



C4d in human tonsil. Staining of frozen section with clone 12D11 (Cat. # HM2229)

**Looking for other products related to complement?**

Visit our website  
[www.hycultbiotech.com](http://www.hycultbiotech.com)

ELISA kits for mouse, rat and pig		
Product name	Sample types	Cat. #
Mouse C1q	P S	HK211
<b>Mouse C3</b>	<b>P S</b>	<b>HK2002 NEW</b>
Mouse C3b	P S	HK216
Mouse C4	P	HK217
Mouse Alternative pathway	P S	HIT422
Mouse Classical pathway	P S	HIT420
Mouse Lectin pathway	P S	HIT421
Pig Alternative pathway	P S	HIT432
Pig Classical pathway	P S	HIT430
Pig Lectin pathway	P S	HIT431
Rat Alternative pathway	P S	HIT412
Rat Classical pathway	P S	HIT410
Rat Lectin pathway	P S	HIT411
Rat TCC	P S	HK106

Validated antibody applications:

<b>F:</b> Frozen sections	<b>FC:</b> Flow cytometry
<b>FS:</b> Functional studies	<b>IA:</b> Immunoassay
<b>IF:</b> Immunofluorescence	<b>IP:</b> Immunoprecipitation
<b>P:</b> Paraffin sections	<b>W:</b> Western blot

## Can't find the sample type you want for an ELISA kit?

Ask the support team to assist you with your research needs on [support@hycultbiotech.com](mailto:support@hycultbiotech.com)

## Want to try antibodies?

Several quantities available, see website. Antibodies can also be purchased at 20 µg vial sizes.

Antibodies to human			
Product name	Clone	Applications	Cat. #
Activated C1s	M241	F FC FS IA IP P W	HM2109
Activated C3	bH6	F IA	HM2168
Activated C3	I3/15	IA W	HM2257
C1-INH	15/12	IA W	HM2411
C1q	JL-1	F FS IA IF W	HM2382
C1s	M81	F FC FS IA IP P W	HM2108
C1s	10/12	FS IA W	HM2412
C2	pAb	IA IP W	HP9066
C3 (beta-chain)	169.5	W	HM2377
C3/C3a	2898	IA W	HM2075
C3/C3a	474	IA W	HM2073
C3/C3b	755	IA W	HM2072
C3/C3b/iC3b (alpha-chain)	18.1	IA W	HM2389
C3/C3b/iC3b/C3c	C3-16.4	FS IA	HM2401
C3a/C3a des Arg	2991	IA W	HM2074
C3aR	17	FC F	HM2195
C3b/iC3b	3E7	FC FS IF	HM2286

Antibodies to human			
Product name	Clone	Applications	Cat. #
C3b/iC3b	5G9	FS	HM2285
C3b/iC3b/C3d	1H8	FC IP W	HM2287
C3b/iC3b/C3c	C3-42.3	FS IA W	HM2394
iC3b/C3dg/C3d	C3-12.2	IA W	HM2395
C3c	4	IP	HM2200
C3c	F1-4	IA IP W	HM2318
C3d	HB2C2	IA IP W	HM2422
C3d	3	IA IP	HM2198
C3g	9	IA IP	HM2199
C4c	99-72-18	IA IP W	HM2399
C4d	12D11	F FC IA W	HM2229
C4d	7H4	F IA W	HM2230
C5	10B6	FS IA IF W	HM2414
C5/C5a	557	FS IA W	HM2077
C5/C5a	561	FS IA	HM2076
C5/C5b	568	IA W	HM2080
C5a/C5a des Arg	2942	F FS IA W	HM2078
C5a/C5a des Arg	2952	F FS IA W	HM2079
C5aR	S5/1	F FC FS P W	HM2094
C5aR	W17/1	FC F P	HM2095
C5L2	pAb	FC F IF W	HP9036
C6	WU6-4	FC FS IA IF IP P W	HM2276
<b>C7</b>	<b>HB2H</b>	<b>IA W</b>	<b>HM2421 NEW</b>
<b>C7</b>	<b>HB10G</b>	<b>IA W</b>	<b>HM2425 NEW</b>
<b>C7</b>	<b>HB10H</b>	<b>IA W</b>	<b>HM2426 NEW</b>
C7	WU4-15	FC IA IF IP W	HM2277
C9	X197	FC F FS IA P W	HM2111
C9 neoantigen	WU13-15	FC F IA P W	HM2264
CD11b	Bear-1	FC F IP	HM2125
CD46	M177	FC FS IA IP W	HM2103
CD55	1C6	FC FS IA W	HM2280
CD55	D17	FC W	HM2105
CD59	MEM-43	FC IP W	HM2120
CFHR1-2	JHD-7.10.1	IA	HM2301
<b>Clusterin</b>	<b>2D5</b>	<b>IA W</b>	<b>HM2435 NEW</b>
<b>Clusterin</b>	<b>4C7</b>	<b>IA W</b>	<b>HM2436 NEW</b>
Coagulation factor XII	10-11-1937	IA W	HM2322
Collectin-10	4F9D7	IA W	HM2356
Complement factor B/Bb	M13/12	IA IP W	HM2256
Complement factor B/Ba	M20/6	IA IP W	HM2255
Complement factor B/Ba	P21/15	IA IP W	HM2254
Complement factor Ba neo-epitope	D22/3	IA W	HM2379

Antibodies to human			
Product name	Clone	Applications	Cat. #
Complement factor D	D10/4	IA	HM2258
Complement factor D	I8/1	IA	HM2259
Complement factor H	C18/3	IA W	HM2248
Complement factor H	L20/3	IA W	HM2249
Complement factor I	1C11	IA W	HM2320
Complement factor I	MBI-1	IA W	HM2319
<b>FHR2</b>	<b>2.12</b>	<b>W</b>	<b>HM2433 NEW</b>
<b>FHR3</b>	<b>3.11</b>	<b>W</b>	<b>HM2427 NEW</b>
<b>FHR4</b>	<b>4A.8</b>	<b>W</b>	<b>HM2438 NEW</b>
FHR4	pAb	IA W	HP9058
<b>FHR5</b>	<b>5.1</b>	<b>W</b>	<b>HM2430 NEW</b>
Ficolin-1	7G1	FC IA W	HM2196
Ficolin-2	GN4	F IA IP	HM2090
Ficolin-2	GN5	F IA IP W	HM2091
Ficolin-3	4H5	F IA IP	HM2089
gC1qR	60.11	FC FS IA IP P W	HM2014
gC1qR	74.5.2	FC FS IA IF IP W	HM2015
MAP44	2D5B6	IA IP P W	HM2296
MASP-1	4H2A9	IA	HM2297
MASP-1	3/3	IA W	HM2408
MASP-1	100/10	IA W	HM2409
MASP-1/3	1E2	IA IP W	HM2092
MASP-1/3	2B11	IA IP W	HM2093
MASP-2	8B5	IA W	HM2190
MASP-2/MAP19	6G12	IA W	HM2191
MASP-3	38:12-3	IA W	HM2216
MBL	3E7	FC FS IA	HM2061
Pro SP-C	pAb	F P W	HP9050
Properdin	1G6D2	FS IA W	HM2354
Properdin	2.9	IA	HM2282
Properdin	3A3E1	FS IA W	HM2355
Properdin	SIM 295-9.4.3	F FC IA W	HM2283
SP-B	pAb	F P IA W	HP9049
TCC	αE11	FC FS IA IF P	HM2167

Antibodies to Mouse			
Product name	Clone	Applications	Cat. #
C1q	7H8	F IA IF	HM1044
C1q	JL-1	F FS IA IF W	HM1096
C3	11H9	FC F IA IF W	HM1045
C3	pAb	F IF P W	HP8012
C3a	3/11	FC FS IA W	HM1072
C3aR	14D4	FC F	HM1123
C3b/iC3b/C3c	2/11	FC F FS IA IF W	HM1065
C3b/iC3b/C3c	3/26	FC F FS IA IF W	HM1078
C4	16D2	IA IF IP W	HM1046
C4d	pAb	FC F P W	HP8033
C5	BB5.1	F FS IA IF IP P	HM1073
C5	pAb	W	HP8013
C5aR	10/92	FC F W	HM1077
C5aR	20/70	FC FS IF	HM1076
C5L2	pAb	FS FC	HP8015
C6	pAb	F W	HP8014
C9	C9-6-25-5	W	HM1134
CD46	MM10	FC F IA IF W	HM1118
CD55	3D5	FC IA P W	HM1115
CD59a	7A6	FC F FS IA IF W	HM1116
CR1/CR2	7E9	FC IF IP W	HM1112
Crry/p65	8A/E6	IA IF W	HM1117
Factor H	1A2	F IA W	HM1119
MBL-A	2B4	IA W	HM1036
MBL-A	8G6	F IA IF W	HM1035
MBL-C	14D12	F IA IF W	HM1038
MBL-C	16A8	IA W	HM1037
Properdin	E12	FS IA W	HM1138
Properdin	H4	FS IA IF W	HM1139

## Need a custom formulation?

Ask us and we will advise you on the possibilities.

## Want a conjugated antibody?

Visit our website to see all available formats.

## Product in bulk quantity?

Contact us for a customized quotation.

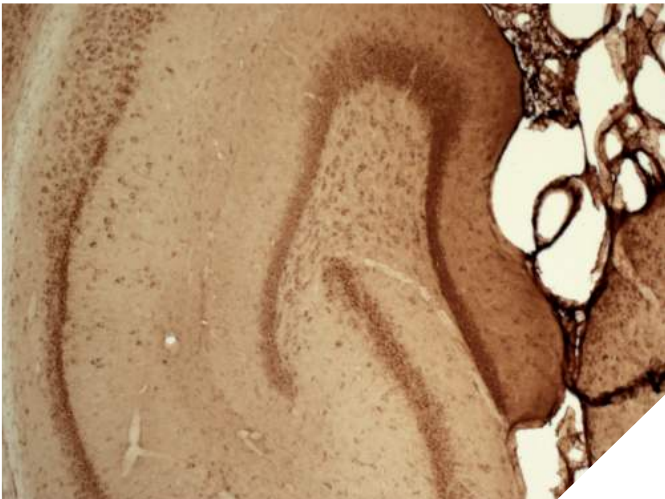


## Antibodies to Rat

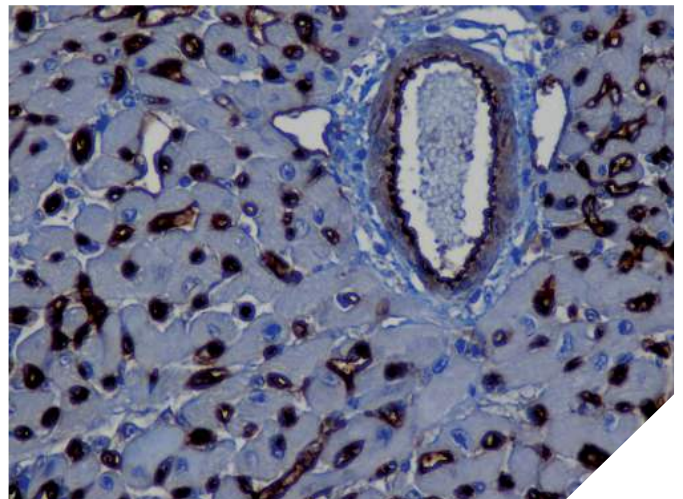
Product name	Clone	Applications	Cat. #
C1q	pAb	F IA IP	HP8021
C3	pAb	IA W	HP8022
C3/C3b	2B10B9B2	IA W	HM3031
C3aR	74	FC F	HM3028
C4	pAb	IA IP	HP8023
C4d	pAb	FC F P W	HP8034
<b>C5</b>	<b>4G2</b>	<b>FS IA W</b>	<b>HM3044 NEW</b>
C5aR	R63	FC F IF IA W	HM3017
C5b-9	2A1	FC F IA IF P	HM3033
C5L2	pAb	FC FS	HP8018
C6	3G11	F IA W	HM3034
CD46	MM1	F IA IF W	HM3038
CD59 Glycoprotein	TH9	FC F FS W	HM3037
Crry	TLD-1C11	FC F FS IA IF W	HM3032
CD55	RDII-24	FC F FS IA IP W	HM3036
CD55	RDIII-7	FC F FS IF W	HM3035
SP-D	IIIH3	IA P W	HM3022
SP-D	IVG8	IA P W	HM3024
SP-D	VIF9	IA P W	HM3023

## Antibodies to Pig

Product name	Clone	Applications	Cat. #
C3	pAb	FC	HP7003
CD55	PD2	FC FS IA W	HM4014
SP-B	pAb	IA W	HP7002

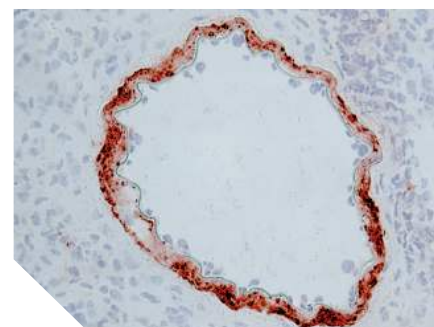


C5 in human brain tissue. Staining of frozen section with clone BB5.1 (Cat. # HM1073)

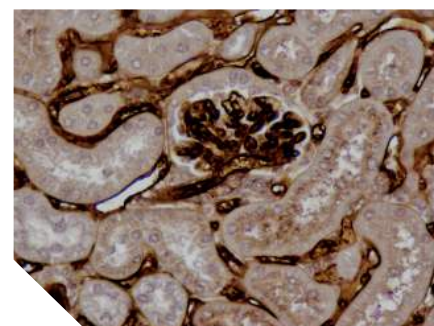


C4d in mouse heart tissue. Staining of paraffin section with polyclonal antibody (Cat. # HP8033)

Human proteins and peptides		
Product name	Quantity	Cat.#
C1, Natural	200 µg	HC2122
C1q, Natural	1 mg	HC2143
C2, Natural	50 µg	HC2124
C3, Natural	250 µg	HC2125
C3a, Natural	50 µg	HC2126
C3a des Arg, Natural	50 µg	HC2127
C4, Natural	250 µg	HC2128
C5, Natural	200 µg	HC2141
C5a, Recombinant	50 µg	HC2101
C5a des Arg, Rec.	50 µg	HC2102
C9, Natural	250 µg	HC2142
Complement factor B, Natural	250 µg	HC2129
Complement factor H, Natural	250 µg	HC2130
Complement factor I, Natural	100 µg	HC2131
Properdin, Natural	100 µg	HC2132



C6 in rat kidney tissue. Staining of frozen section with clone 3G11 (Cat. # HM3034)



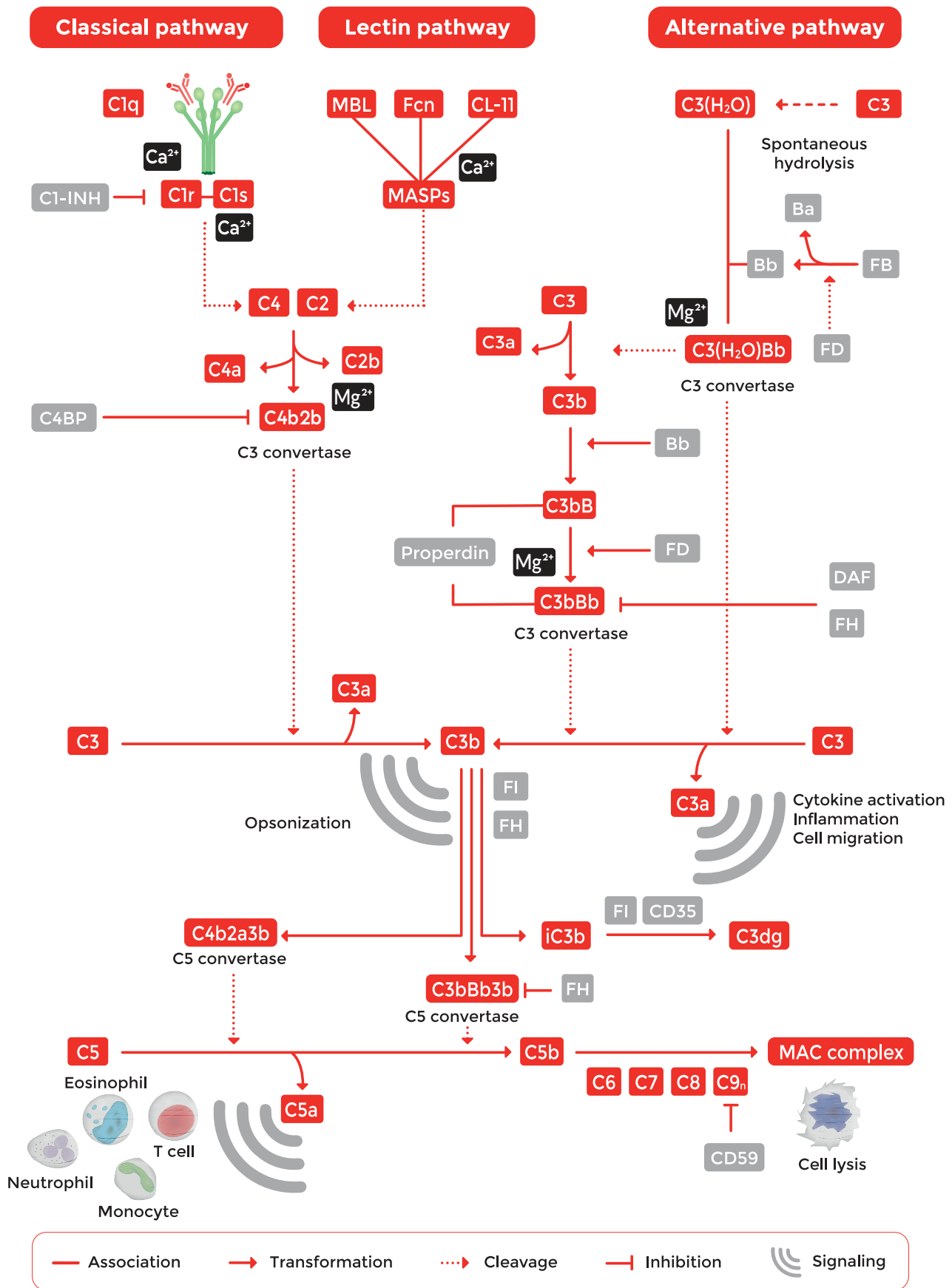
C4d in mouse kidney tissue. Staining of paraffin section with polyclonal antibody (Cat. # HP8033)

Proteins and peptides to other species			
Product name	Species	Quantity	Cat. #
C5a, Recombinant	Mouse	50 µg	HC1101
C5a des Arg, Recombinant	Mouse	50 µg	HC1102
Cobra Venom Factor, Recombinant		50 µg	HC4073

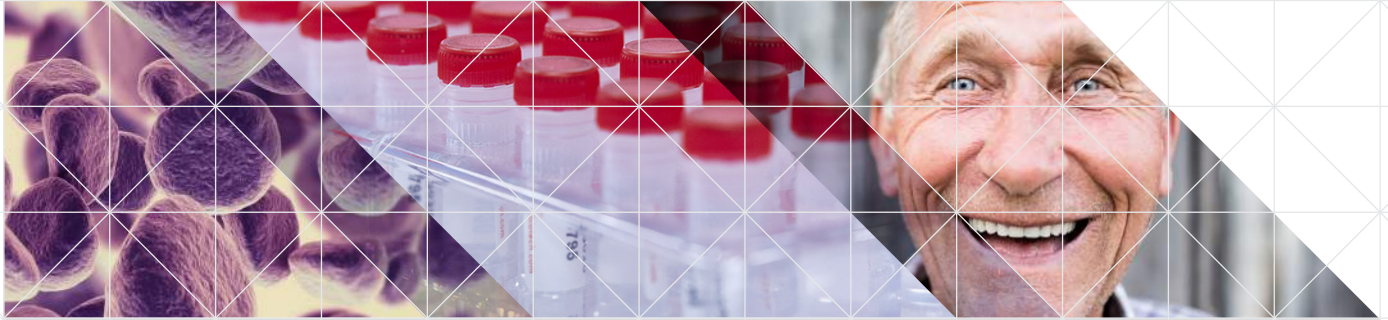
At our headquarters in Uden, we, as a privately-owned company, undertake the development, manufacturing, and storage of our products. Our offerings are accessible via our Dutch headquarters, sales office in Wayne (PA) USA, and through our network of over 65 distributors present in over 50 countries.

Since 2008, we have maintained our EN ISO 13485:2016 certification, demonstrating our commitment to meeting the highest standards in the industry.

Take advantage of our dedicated support team for any technical assistance you need while using our products or considering them for your research needs. Contact us directly at [support@hycultbiotech.com](mailto:support@hycultbiotech.com) and let us help you make the most of your scientific endeavors.



Read more:



## What we stand for

- In-house development, production of antibodies and assays
- High quality products for reliable measurements and reproducibility

- Specialized, independent and professional support
- Experts in complement
- Collaboration in scientific projects

Let's improve **health**

[www.hycultbiotech.com](http://www.hycultbiotech.com)



### Hycult Biotech

Frontstraat 2a  
5405 PB Uden  
The Netherlands

T +31 (0)413 251335

F +31 (0)413 248353

E [info@hycultbiotech.com](mailto:info@hycultbiotech.com)

### Hycult Biotech Inc.

987 Old Eagle Road  
STE 709, Wayne  
PA 19087, USA

T +1 855 2492858

F +1 484 3683558

E [orders-us@hycultbiotech.com](mailto:orders-us@hycultbiotech.com)

Even though the information provided here is verified and believed to be accurate, there is always a chance that it is imprecise or may be outdated. Please make sure to visit our website [www.hycultbiotech.com](http://www.hycultbiotech.com) for the most recent product information and news.