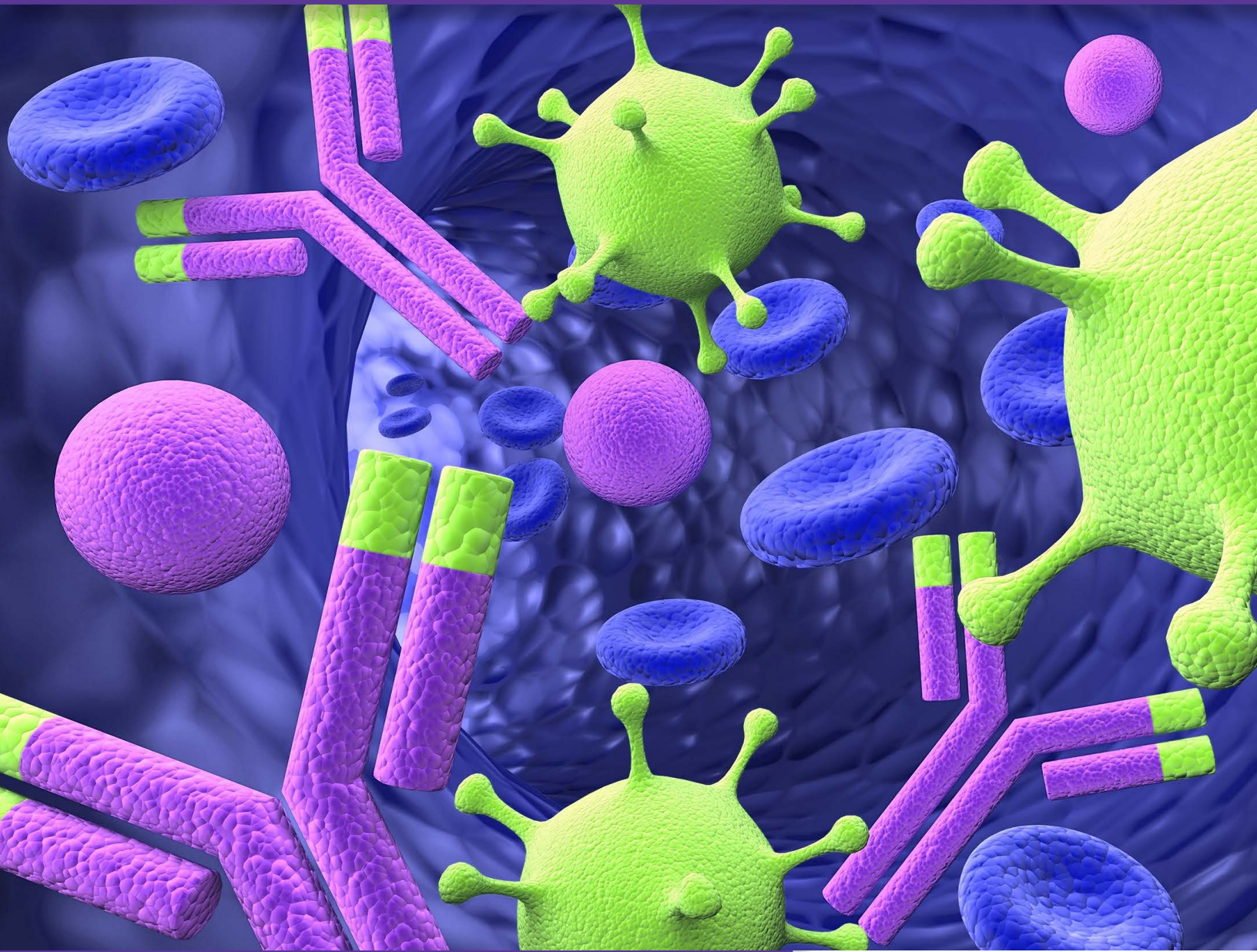


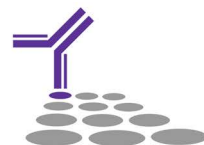
Mouse Cell Surface Antibodies



Quality Antibodies for Quality Research

SouthernBiotech

www.SouthernBiotech.com info@SouthernBiotech.com



Mouse Cell Surface Antibodies

Specificity	Clone	Cat. No.	Purified	LE/AF	Biotin	Pacific Blue™	Fluorescein	Alexa Fluor® 488	R-Phycoerythrin	Spectral Red®	PE/CY5.5	PE/CY7	PE/Texas Red®	Allophycocyanin	Alexa Fluor® 647	CY5	APC/CY5.5	APC/CY7	Alexa Fluor® 700
BiP	76-E6	1775	🐭		🐭														
BP-1 (Ly51)	FG35.4	1770	🐭		🐭		🐭		🐭										
CD2	12-15	1525	🐭	🐭	🐭		🐭		🐭										
CD3ε	145-2C11	1530	🐭	🐭	🐭		🐭	🐭	🐭	🐭				🐭	🐭				
CD3ε	500-A2	1531	🐭	🐭	🐭		🐭		🐭	🐭				🐭		🐭	🐭		
CD3ε	C363.29B	1535	🐭	🐭	🐭		🐭		🐭	🐭				🐭		🐭		🐭	
CD4	GK1.5	1540	🐭	🐭	🐭	🐭	🐭	🐭	🐭	🐭	🐭	🐭	🐭	🐭	🐭	🐭	🐭	🐭	🐭
CD5	B19.1	1545	🐭		🐭		🐭		🐭	🐭				🐭					
CD5	4H8E5	1546	🐭		🐭		🐭		🐭	🐭				🐭					
CD5	53-7.3	1547	🐭		🐭		🐭	🐭	🐭					🐭	🐭				
CD8α (Ly-2)	53-6.7	1550	🐭	🐭	🐭	🐭	🐭	🐭	🐭	🐭	🐭	🐭	🐭	🐭	🐭	🐭	🐭	🐭	🐭
CD11a (Integrin α _L)	I21/7	1555	🐭	🐭	🐭		🐭		🐭			🐭							
CD11b (Integrin α _M)	3A33	1560	🐭	🐭	🐭		🐭	🐭	🐭	🐭		🐭		🐭		🐭		🐭	🐭
CD11b (Integrin α _M)	M1/70	1561	🐭	🐭	🐭	🐭	🐭	🐭	🐭	🐭		🐭		🐭	🐭	🐭		🐭	🐭
CD11c (Integrin α _X)	N418	1565	🐭			🐭	🐭	🐭	🐭					🐭	🐭				🐭
CD16/32 (FcγIII/II receptor)	93	1630	🐭	🐭	🐭		🐭		🐭	🐭	🐭	🐭		🐭					
CD18 (Integrin β ₂)	C71/16	1570	🐭	🐭	🐭		🐭		🐭	🐭				🐭					
CD19	6D5	1575	🐭	🐭	🐭	🐭	🐭	🐭	🐭	🐭	🐭	🐭		🐭	🐭	🐭			🐭
CD19	MB19-1	1576	🐭		🐭		🐭		🐭	🐭	🐭			🐭			🐭	🐭	
CD22	2D6 (NIM-R6)	1580	🐭	🐭	🐭		🐭		🐭	🐭				🐭					
CD23 (FcεRII)	2G8	1585	🐭	🐭	🐭		🐭		🐭			🐭		🐭					
CD24 (HSA)	91	1590	🐭	🐭	🐭		🐭		🐭	🐭				🐭					
CD24 (HSA)	30-F1	1815	🐭	🐭	🐭		🐭		🐭	🐭				🐭					
CD25 (IL-2Rα)	7D4	1595	🐭	🐭	🐭		🐭		🐭	🐭		🐭		🐭					
CD25 (IL-2Rα)	3C7	1600	🐭	🐭	🐭		🐭		🐭	🐭		🐭		🐭					🐭
CD28	37.51	1610	🐭	🐭	🐭		🐭		🐭	🐭				🐭					
CD28	PV-1	1615	🐭	🐭	🐭		🐭		🐭	🐭				🐭					
CD30	mCD30.1 (2SH12-5F)	1620	🐭	🐭	🐭		🐭		🐭					🐭					
CD31 (PECAM-1)	390	1625	🐭	🐭	🐭	🐭	🐭	🐭	🐭			🐭		🐭	🐭				
CD38	NIMR-5	1635	🐭	🐭	🐭		🐭		🐭	🐭				🐭					
CD38	90	1640	🐭	🐭	🐭	🐭	🐭	🐭	🐭	🐭				🐭	🐭				
CD40	1C10	1645	🐭	🐭	🐭		🐭		🐭	🐭				🐭					
CD44	KM201	1500	🐭	🐭	🐭		🐭		🐭	🐭				🐭					
CD45 (Ly-5, LCA)	I3/2.3	1660	🐭	🐭	🐭	🐭	🐭	🐭	🐭	🐭	🐭	🐭	🐭	🐭	🐭			🐭	🐭
CD45.1 (Ly-5.1)	A20	1795	🐭		🐭	🐭	🐭	🐭	🐭	🐭	🐭	🐭		🐭	🐭	🐭	🐭	🐭	🐭
CD45.2 (Ly-5.2)	104	1800	🐭		🐭	🐭	🐭	🐭	🐭	🐭	🐭	🐭		🐭	🐭	🐭	🐭		🐭
CD45R (B220)	RA3-6B2	1665	🐭	🐭	🐭		🐭		🐭	🐭	🐭	🐭	🐭	🐭	🐭	🐭	🐭	🐭	🐭
CD45RB	C363.16A	1675	🐭		🐭		🐭		🐭	🐭				🐭					🐭

Mouse Cell Surface Antibodies

Specificity	Clone	Cat. No.	Purified	LE/AF	Biotin	Pacific Blue™	Fluorescein	Alexa Fluor® 488	R-Phycoerythrin	Spectral Red®	PE/CY5.5	PE/CY7	PE/Texas Red®	Allophycocyanin	Alexa Fluor® 647	CY5	APC/CY5.5	APC/CY7	Alexa Fluor® 700
CD45RC	GL24	1685	🐭				🐭		🐭										
CD45RC	C455.1F	1820	🐭				🐭		🐭										
CD49b (Integrin α_2 , pan-NK)	DX5	1806	🐭	🐭	🐭		🐭	🐭	🐭					🐭	🐭			🐭	
CD49d (Integrin α_4)	PS/2	1520	🐭	🐭	🐭		🐭		🐭										🐭
CD49e (Integrin α_5)	5H10.27 (MRF5)	1695	🐭	🐭	🐭		🐭	🐭	🐭						🐭				
CD54 (ICAM-1)	YN1/1.7.4	1701	🐭	🐭	🐭	🐭	🐭	🐭	🐭					🐭	🐭				🐭
CD62L (L-selectin)	MEL-14	1705	🐭	🐭	🐭	🐭	🐭	🐭	🐭	🐭		🐭		🐭	🐭			🐭	🐭
CD69 (VEA)	H1.2F3	1715	🐭	🐭	🐭	🐭	🐭	🐭	🐭	🐭		🐭		🐭	🐭				
CD71 (TfR)	RI7217	1720	🐭	🐭	🐭		🐭		🐭										
CD72.1	10.1.D2	1725	🐭		🐭		🐭	🐭	🐭					🐭	🐭				
CD79b (Ig β)	HM79-12	1830	🐭	🐭	🐭		🐭		🐭					🐭	🐭				
CD80 (B7-1)	1G10	1730	🐭	🐭	🐭		🐭		🐭	🐭				🐭					
CD81 (TAPA-1)	2F7	1825	🐭	🐭	🐭		🐭		🐭					🐭					
CD86 (B7-2)	GL1	1735	🐭	🐭	🐭		🐭	🐭	🐭	🐭		🐭		🐭	🐭				🐭
CD86 (B7-2)	2D10	1915	🐭	🐭	🐭		🐭		🐭	🐭		🐭		🐭					
CD90 (Thy-1)	G7	1740	🐭	🐭	🐭		🐭		🐭	🐭				🐭					
CD90.2 (Thy-1.2)	30-H12	1750	🐭	🐭	🐭	🐭	🐭	🐭	🐭	🐭				🐭	🐭				🐭
CD94	18d3	1809	🐭		🐭		🐭		🐭										🐭
CD102 (ICAM-2)	3C4 (mIC2/4)	1925	🐭	🐭	🐭	🐭	🐭	🐭	🐭						🐭				🐭
CD103 (Integrin α_2)	2E7	1810	🐭	🐭	🐭	🐭	🐭	🐭	🐭						🐭				
CD104 (Integrin β_4)	346-11A	1855	🐭	🐭															
CD105 (Endoglin)	MJ7/18	1860	🐭			🐭													
CD106 (VCAM-1)	M/K-2	1510	🐭	🐭	🐭		🐭		🐭										
CD107a (LAMP-1)	1D4B	1920	🐭				🐭	🐭						🐭	🐭				
CD107b (LAMP-2)	ABL-93	1921	🐭				🐭							🐭					
CD117 (c-Kit)	2B8	1880	🐭	🐭	🐭	🐭	🐭	🐭	🐭	🐭				🐭	🐭	🐭	🐭	🐭	🐭
CD117 (c-Kit)	3C1	1885	🐭		🐭		🐭		🐭										
CD122 (IL-2R β)	5H4	1905	🐭	🐭	🐭		🐭		🐭					🐭					
CD152 (CTLA-4)	1B8	1790	🐭	🐭	🐭		🐭		🐭										
CD152 (CTLA-4)	9H10	1791	🐭	🐭															
H-2D ^b	28-14-8	1910	🐭	🐭	🐭		🐭	🐭	🐭					🐭					
H-2D ^b	27-11-13S	1913	🐭	🐭	🐭		🐭	🐭	🐭										
H-2D ^d	34-5-8S	1912	🐭		🐭		🐭		🐭										
H-2D ^k	15-5-5	1914	🐭		🐭		🐭		🐭										
H-2K ^d /H-2D ^d	34-1-2S	1911	🐭		🐭		🐭		🐭										
H-2K ^k	36-7-5	1917	🐭		🐭		🐭		🐭										
H-2K ^k	16-3-22S	1916	🐭		🐭		🐭		🐭										
H-2K ^k	11-4.1	1893	🐭																

Mouse Cell Surface Antibodies

Specificity	Clone	Cat. No.	Purified	LE/AF	Biotin	Pacific Blue™	Fluorescein	Alexa Fluor® 488	R-Phycoerythrin	Spectral Red®	PE/CY 5.5	PE/CY7	PE/Texas Red®	Allophycocyanin	Alexa Fluor® 647	CY5	APC/CY 5.5	APC/CY7	Alexa Fluor® 700
I-A ^b	25-9-3	1896																	
I-A ^d (Aβ ^d)	34-5-3	1901																	
I-E ^k	14-4-4S	1897																	
I-E ^k	17-3-3S	1898																	
KLRG1 (MAFA)	2F1	1807																	
LPAM-1 (Integrin α ₄ β ₇)	DATK32	1870																	
LY-6A/E (Sca-1)	D7	1755																	
Ly-6C	HK1.4	1760																	
Ly-6G/Ly-6C (Gr-1)	RB6-8C5	1900																	
Ly-49F	HBF-719	1803																	
Ly-49I	YLI-90	1802																	
Ly-49C/F/H/I	14B11	1801																	
MAdCAM	MECA-367	1865																	
MHC Class II	NIMR-4	1895																	
NK1.1	PK136	1805																	
NKG2-A/C/E	20d5	1804																	
Qa-2	695H1-9-9	1906																	
TCRβ	H57-597	1785																	
TCRγδ	UC7-13D5	1780																	

Corporate Offices

160 Oxmoor Blvd
Birmingham, AL 35209
USA

Mailing Address

PO Box 26221
Birmingham, AL 35260
USA

Tel 205.945.1774

Fax 205.945.8768

Email info@SouthernBiotech.com

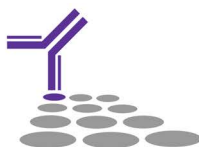
Technical Support technical@SouthernBiotech.com

Website www.SouthernBiotech.com

SouthernBiotech is ISO 9001:2015 Certified

SouthernBiotech

www.SouthernBiotech.com info@SouthernBiotech.com



Spectral Red® is a registered trademark of Southern Biotechnology Associates, Inc.
Pacific Blue™ is a trademark of Thermo Fisher Scientific, Inc. and its subsidiaries
Alexa Fluor® and Texas Red® are registered trademarks of Thermo Fisher Scientific, Inc. and its subsidiaries
Cy* is a registered trademark of GE Healthcare
MM-MCD-04