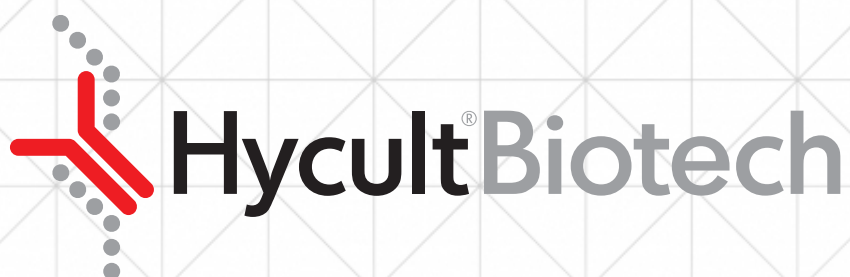




# Complement and collectins



bringing innate immunity to the **next level**

# Complement and collectins

Hycult Biotech is a leading world-class manufacturer of research reagents in the field of innate immunity. We are a specialized partner in the development and manufacturing of assays, antibodies, proteins and peptides. With a focus on innate immunity, we pay special attention to products relating to complement, antimicrobial peptides, granulocyte proteins, acute phase proteins, TLR, LPS and microbial toxins.

The complement system is not only central to innate immune responses but is also a dominant player in adaptive immunity. Damage-associated molecular patterns (DAMPs) are translated into cellular responses through interaction with specific receptors on distinct cells. Among these are pattern-recognition receptors (PRRs) which identify pathogen associated molecular patterns (PAMPs) and endogenous danger signals, e.g. apoptosis related membrane fragments. Complement components like C1q, C3 and the collectin mannose-binding lectin (MBL) are essential soluble danger sensing proteins that are activated by both endogenous and exogenous stimuli.

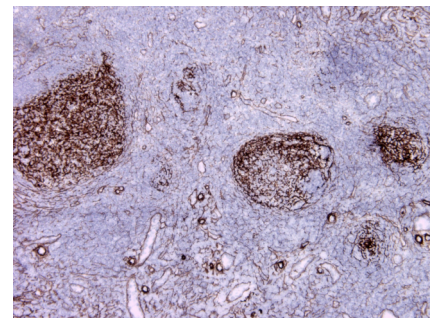
Validated ELISA kit sample types:

<b>BF:</b> Bronchoalveolar fluid	<b>CF:</b> Cerebrospinal fluid
<b>CS:</b> Cell culture supernatant	<b>JF:</b> Joint fluid
<b>P:</b> Plasma	<b>S:</b> Serum
<b>SP:</b> Sputum	<b>U:</b> Urine

ELISA kits for human		
Product name	Sample types	Cat. #
C1q	BF P S	HK356
C3a	BF P S U	HK354
C3c	P S	HK368
C5a	P S	HK349
Coagulation factor XII	P S	HK373
Collectin-10	P S	HK364
Complement factor D	P S U	HK343
Complement factor H	P S U	HK342
Complement factor I	P S	HK355
Factor H, 402H/Y variant	P S	HK353
Ficolin-1	P S	HK357
Ficolin-2	CS P S	HK336
Ficolin-3	CS P S	HK340
gC1qR	CS P	HK362
MAp44	P S	HK359
MASP-2	CS P S	HK326
MASP-3	P S	HK339
MBL	CS P S	HK323
Properdin	BF CF P S U	HK334
sCD59	P S	HK373
SP-D	BF CS P	HK335
TCC	CF CS JF P U	HK328

## Can't find the sample type you want for an ELISA kit?

Ask the support team to assist you with your research needs on [support@hycultbiotech.com](mailto:support@hycultbiotech.com)!



C4d in human tonsil. Staining of frozen section with clone 12D11 (Cat. # HM2229)

## How many tests would you like?

Almost all our ELISA kits are available in both a 1-plate and a 2-plate format!

## ELISA kits for other species

Product name	Sample types	Cat. #
Mouse alt. pathway	P S	HIT422
Mouse C1q	P S	HK211
Mouse C3b	P S	HK216
Mouse classical pathway	P S	HIT420
Mouse lectin pathway	P S	HIT421
Mouse MBL-A	CS P S	HK208
Mouse MBL-C	CS P S	HK209
Pig alternative pathway	P S	HIT432
Pig C5a	P S	HK701
Pig classical pathway	P S	HIT430
Pig lectin pathway	P S	HIT431
Rat alternative pathway	P S	HIT412
Rat classical pathway	P S	HIT410
Rat lectin pathway	P S	HIT411
Rat TCC	P S	HK106

Validated antibody applications:

<b>F:</b> Frozen sections	<b>FC:</b> Flow cytometry
<b>FS:</b> Functional studies	<b>IA:</b> Immunoassay
<b>IF:</b> Immunofluorescence	<b>IP:</b> Immunoprecipitation
<b>P:</b> Paraffin sections	<b>W:</b> Western blot

## Looking for other products related to complement?

We have more than ten folders that highlight different segments of our portfolio, such as LPS, coagulation molecules and acute phase proteins!

## Want to try different antibodies?

Use the sampler pack (Cat. # HM8999) to find the best antibody for your specific setup!

## Antibodies to human

Product name	Clone	Applications	Cat. #
Activated C1s	M241	F FC FS IA IP P W	HM2109
Activated C3	bH6	F IA	HM2168
Activated C3	I3/15	IA W	HM2257
C1s	M81	F FC FS IA P W	HM2108
C3/C3a	2898	IA W	HM2075
C3/C3a	474	IA W	HM2073
C3/C3b	755	IA W	HM2072
C3a/C3a des Arg	2991	IA W	HM2074
C3aR	17	FC F	HM2195
C3b/iC3b	3E7	FC FS IF	HM2286
C3b/iC3b	5G9	FS	HM2285
C3b/iC3b/C3d	1H8	FC IP W	HM2287
C3c	4	IP	HM2200
C3c	F1-4	IA IP W	HM2318
C3d	3	IA IP	HM2198
C3g	9	IA IP	HM2199
C4d	12D11	F FC IA W	HM2229
C4d	7H4	F IA W	HM2230
C5/C5a	557	FS IA W	HM2077
C5/C5a	561	FS IA	HM2076
C5/C5b	568	IA W	HM2080

Antibodies to human			
Product name	Clone	Applications	Cat. #
C5a/C5a des Arg	2942	F FS IA W	HM2078
C5a/C5a des Arg	2952	F FS IA P W	HM2079
C5aR	S5/1	F FC FS IF P W	HM2094
C5aR	W17/1	F FC P	HM2095
C5L2	pAb	F FC IF W	HP9036
C6	WU 6-4	FC FS IA IF IP P W	HM2276
C7	WU 4-15	FC IA IF IP W	HM2277
C9	X197	F FC FS IA P W	HM2111
C9 neoantigen	WU 13-15	F FC IA IF P W	HM2264
CD11b	Bear-1	FC F IP	HM2125
CD35 (CR1)	31R	F FC IA IP P W	HM2107
CD46	M177	FC FS IA IP W	HM2103
CD59	MEM-43	FC FS IP W	HM2120
CFHR1-2	JHD-7.10.1	IA W	HM2301
Coagulation factor XII	10-11-37	IA W	HM2322
Collectin-10	4F9D7	IA W	HM2356
Complement factor B/Ba	M20/6	IA IP W	HM2255
Complement factor B/Ba	P21/5	IA IP W	HM2254
Complement factor B/Bb	M13/12	IA IP W	HM2256
Complement factor D	D10/4	IA W	HM2258
Complement factor D	I8/1	IA W	HM2259
Complement factor H	C18/3	IA W	HM2248
Complement factor H	L20/3	IA W	HM2249
Complement factor I	1C11	IA W	HM2320
Complement factor I	MBI-1	IA W	HM2319
DAF	D17	FC IA IP	HM2105
DAF	1C6	FC FS IA W	HM2280
FHR1-2	JHD-7.10.1	IA W	HM2301
FHR4	pAb	IA W	HP9058
Ficolin-1	7G1	FC IA W	HM2196
Ficolin-1	pAb	FC IF W	HP9039
Ficolin-2	GN4	F IA IP	HM2090
Ficolin-2	GN5	F IA IP W	HM2091
Ficolin-3	4H5	F FC IA IF IP P W	HM2089
gC1qR	60.11	FC FS IA IP P W	HM2014
gC1qR	74.5.2	FC FS IA IF IP W	HM2015
MAp44	2D5B6	IA IP P W	HM2296
MASP-1	4H2A9	IA	HM2297
MASP-1/3	1E2	IA IP W	HM2092
MASP-1/3	2B11	IA IP W	HM2093

### Need a custom formulation?

Ask us and we will advise you on the possibilities!

### Want a conjugated antibody?

Visit our website to see all available formats!

### Product in bulk quantity?

Contact us for a customized quotation!

## Antibodies to human

Product name	Clone	Applications	Cat. #
MASP-2	8B5	IA W	HM2190
MASP-2/MAP19	6G12	IA W	HM2191
MASP-3	38:12-3	IA W	HM2216
MBL	3E7	F FC FS IA W	HM2061
Pro SP-C	pAb	F P W	HP9050
Properdin	1G6D2	FS IA W	HM2354
Properdin	2.9	IA W	HM2282
Properdin	3A3E1	FS IA W	HM2355
Properdin	SIM 295-9.4.3	F FC IA W	HM2283
SP-B	pAb	F IA P W	HP9049
TCC	aE11	F FC FS IA IF P	HM2167

## Antibodies to mouse

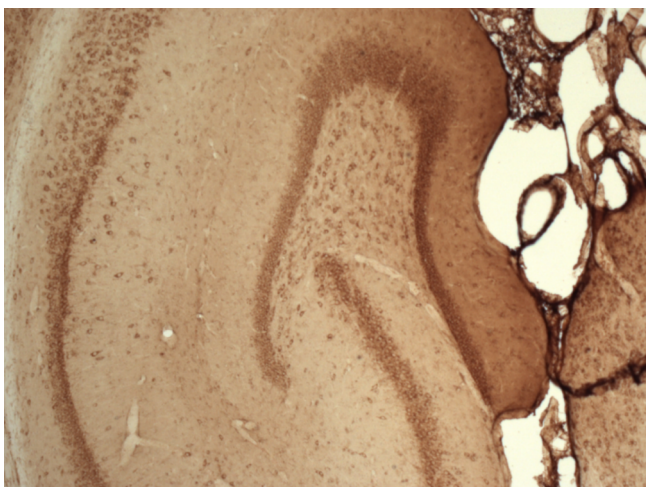
Product name	Clone	Applications	Cat. #
C1q	7H8	F IA IF	HM1044
C1q	JL-1	F FS IA IF W	HM1096
C3	11H9	F FC IA IF W	HM1045
C3	pAb	F IF W	HP8012
C3a	3/11	FC FS IA W	HM1072
C3aR	14D4	F FC	HM1123
C3b/iC3b/C3c	2/11	F FC FS IA IF W	HM1065
C3b/iC3b/C3c	3/26	F FC FS IA IF W	HM1078
C4	16D2	IA IF IP W	HM1046
C4d	pAb	F FC P W	HP8033
C5	BB5.1	F FS IA IF IP P	HM1073
C5	pAb	W	HP8013
C5aR	10/92	F FC W	HM1077
C5aR	20/70	FC FS IF	HM1076
C5L2	pAb	FC FS	HP8015
C6	pAb	F W	HP8014
C9	C9-6-25-5	IA W	HM1134
CD46	MM10	F FC IA IF W	HM1118
CD55	3D5	FC IA W	HM1115
CD59a	7A6	F FC FS IA IF W	HM1116
CR1/CR2	7E9	FC IF IP W	HM1112
Crry/p65	8A/E6	IA	HM1117
Dectin-1	2A11	F FC FS IP	HM1067
Factor H	1A2	F IA W	HM1119
MBL-A	2B4	IA W	HM1036
MBL-A	8G6	F IA IF W	HM1035
MBL-C	14D12	F IA IF W	HM1038
MBL-C	16A8	IA W	HM1037
MGL	ER-MP23	F FC FS P	HM1081
Properdin	E12	FS IA W	HM1138
Properdin	H4	FS IA IF W	HM1139

## Antibodies to rat

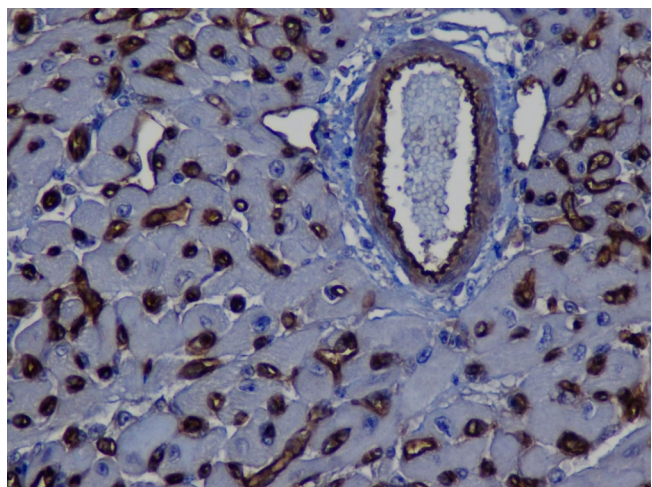
Product name	Clone	Applications	Cat. #
C1q	pAb	F IA IP	HP8021
C3	pAb	IA W	HP8022
C3/C3b	2B10B9B2	IA W	HM3031
C3aR	74	F FC	HM3028
C4	pAb	IA IP	HP8023
C4d	pAb	F FC P W	HP8034
C5aR	R63	F FC IA IF W	HM3017
C5b-9	2A1	F FC IA IF P W	HM3033
C5L2	pAb	FC FS	HP8018
C6	3G11	F IA W	HM3034
CD46	MM.1	F IA IF W	HM3038
CD59 glycoprotein	TH9	F FC FS W	HM3037
Crry	TLD-1C11	F FC FS IA IF W	HM3032
DAF	RDII-24	F FC FS IA W	HM3036
DAF	RDIII-7	F FC FS IF W	HM3035
SP-D	IIIH3	IA P W	HM3022
SP-D	IVG8	IA P W	HM3024
SP-D	VIF9	IA P W	HM3023

## Antibodies for other species

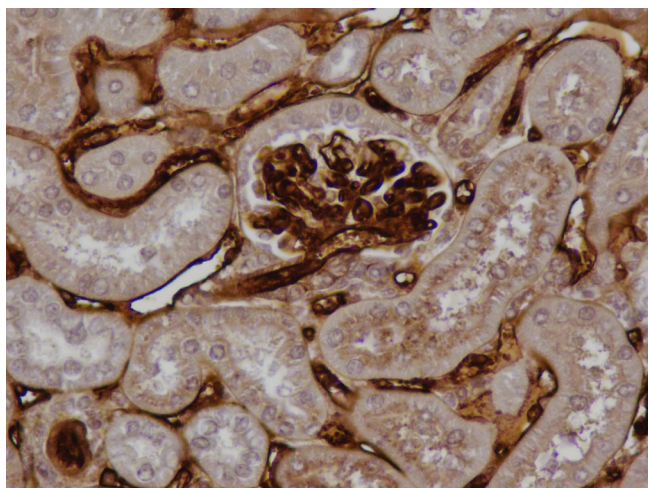
Product name	Species	Clone	Applications	Cat. #
C3	Pig	pAb	FC	HP7003
DAF	Pig	PD2	FC IA W	HM4014
SP-B	Pig	pAb	IA W	HP7002



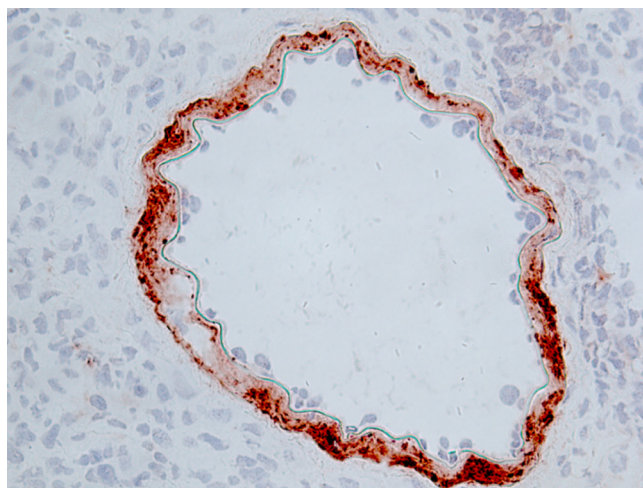
C5 in human brain tissue. Staining of frozen section with clone BB5.1 (Cat. # HM1073)



C4d in mouse heart tissue. Staining of paraffin section with polyclonal antibody (Cat. # HP8033)



C4d in mouse kidney tissue. Staining of paraffin section with polyclonal antibody (Cat. # HP8033)



C6 in rat kidney tissue. Staining of frozen section with clone 3G11 (Cat. # HM3034)

### Human proteins and peptides

Product name	Quantity	Cat. #
C1, Natural	200 µg	HC2122
C1q, Natural	1 mg	HC2123
C2, Natural	50 µg	HC2124
C3, Natural	250 µg	HC2125
C3a, Natural	50 µg	HC2126
C3a des Arg, Natural	50 µg	HC2127
C4, Natural	250 µg	HC2128
C5a, Recombinant	50 µg	HC2101
C5a des Arg, Rec.	50 µg	HC2102
C5L2, Peptide	10 µg	HC2103
Factor B, Natural	250 µg	HC2129
Factor H, Natural	250 µg	HC2130
Factor I, Natural	100 µg	HC2131
Properdin, Natural	100 µg	HC2132

### Proteins and peptides for other species

Product name	Species	Quantity	Cat. #
C5a, Recombinant	Mouse	50 µg	HC1101
C5a des Arg, Rec.	Mouse	50 µg	HC1102
C5L2, Peptide	Mouse	10 µg	HC1103
C5L2, Peptide	Rat	10 µg	HC3103



## What we stand for

- Original manufacturer
- 25 years experience
- Support within 24 hours
- Innate immunity focus
- Reliable and robust
- Scientific drive

Hycult Biotech, bringing innate immunity to the **next level**



[www.hycultbiotech.com](http://www.hycultbiotech.com)

Hycult Biotech  
is distributed by:

Even though the information provided is verified and believed to be accurate, there is always a chance that it is imprecise or may be outdated. Please make sure to visit our website for the most recent product information or contact us in case you have any questions or comments.

Hycult Biotech  
Frontstraat 2a  
5405 PB Uden  
The Netherlands  
T +31 (0)413 251335  
F +31 (0)413 248353  
E [info@hycultbiotech.com](mailto:info@hycultbiotech.com)

Hycult Biotech Inc.  
987 Old Eagle School Road  
STE 707, Wayne  
PA 19087, USA  
T +1 855 2492858  
F +1 484 3683558  
E [orders-us@hycultbiotech.com](mailto:orders-us@hycultbiotech.com)